

VILNIUS/INTL - EYVI

1. Koordinatės ir padėtis

54 38 13N 025 17 16E

6 km atstumu į pietus nuo Vilniaus miesto centro

2. Adresas

Oro uostas

Rodūnios kelias 10A

02189 Vilnius-38

Tel.: (8 5) 232 9323

(8 5) 273 9318

Faks. (8 5) 232 9122

AFS EYVIYDYX

3. Paskirtis

Skrydžiai pagal IFR ir VFR

4. Darbo valandos

AD administracija

Pirmadieniai - ketvirtadieniai:

0500 – 1400 (0400 – 1300)

Penktadieniai: 0500 – 1245 (0400 – 1145).

Aerodromo: H24.

Pagal paklausimą*: H24.

* H24. Užsakomųjų skrydžių laikus derinti su Gamybine dispečerine tarnyba -

Tel.: (8 5) 232 9324,

(8 5) 273 9322

Mob. 8 612 90 122

El. p. ops@vno.lt

5. Muitinė/Imigracija

H24

6. Degalai, tepalai ir priemonės nuo apledėjimo

Degalai: JET A1, AVGAS-100LL

Tepalai: nėra

Priemonės nuo apledėjimo: yra

7. Angarai atskrendantiems orlaiviams

Yra

8. Taisymo įranga atskrendantiems orlaiviams

Yra

9. Gelbėjimo ir priešgaisrinė tarnyba

Priešgaisrinė tarnyba: H24.

Priešgaisrinės įrangos kategorija: CAT 7.

Gelbėjimo įranga: yra.

1. Coordinates and location

54 38 13N 025 17 16E

6 km S from Vilnius

2. Address

Airport

Rodūnios kelias 10A

LT-02189 Vilnius

Tel.: +370 5 232 9323

+370 5 273 9318

Fax.: +370 5 232 9122

AFS: EYVIYDYX

3. Approved for

IFR and VFR flights

4. Operational hours

AD administration

MON - THU:

0500 – 1400 (0400 – 1300);

FRI: 0500 – 1245 (0400 – 1145).

Aerodrome: H24.

On request*: H24.

* H24. For non-scheduled (charter) flights AD available strictly by agreement with the Ground Operations Service:

Tel.: +370 5 232 9324,

+370 5 273 9322

Mob.: +370 612 90 122

E-mail: ops@vno.lt

5. Customs/Immigration

H24

6. Fuel, Oil and De-icing Fluid, etc.

Fuel: JET A1, AVGAS-100LL

Oil: NIL

De-icing fluid: Available

7. Hangar Space for Visitors

Available

8. Repair Facilities Available

Available

9. Rescue and Fire Fighting Service

Fire fighting service: H24.

Category for fire fighting equipment: CAT 7.

Rescue equipment: Available.

[vykus avarijai aerodromo teritorijoje, gelbėjimo darbus atlieka aerodromo administracija, pasitelkusi aplink esančias paieškos ir gelbėjimo struktūras. Apie įvykį pranešti:

- a) priešgaisrinei tarnybai
Tel.: (8 5) 213 6286
01
- b) Aeronautikos gelbėjimo koordinaciniam centrui
Tel.: (8 5) 219 4587
(8 5) 219 4588
(8 5) 219 4585
Mob. 8 610 46 024
- c) Civilinės aviacijos administracijai
Tel.: (8 5) 273 9259
(8 5) 273 9260
Mob. 8 698 85 945

10. Sezoninis tinkamumas

Sniego valymo įranga: yra

11. Viešbučiai

Mieste

12. Restoranas

Mieste

13. Turizmo biuras

Mieste

14. Medicinos įstaigos

Pirmoji pagalba AD

Ligoninės mieste

15. Transportas

Autobusai ir taksi, automobilių nuoma AD

16. Pastabos

- a. Išskrendantys orlaiviai pradeda ryšį su TWR, kad gautų ATC leidimą dar prieš pradėdami riedėti. Naudojamosi 118.200 MHz dažniu. Išskrendantys orlaiviai 118.200 MHz dažniu gauna iš TWR leidimą stumti ir riedėti.
- b. Mokomieji, pratybų bei techninių bandymų skrydžiai galimi tik Vilniaus TWR leidimu.
- c. Kilimo ir tūpimo tako klasifikacija:

<u>KTT Nr.</u>	<u>KTT kodas</u>	<u>Danga</u>
02	4E	Asfaltbetonis
20	4E	Asfaltbetonis

In emergency on the territory of aerodrome rescue and fire fighting service is provided by appropriate neighbouring authorities. An incident should be reported to:

- a) Fire fighting service
Tel.: +370 5 213 6286
01
- b) Aeronautical Rescue Coordination Centre
Tel.: +370 5 219 4587
+370 5 219 4588
+370 5 219 4585
Mob.: +370 610 46 024
- c) Civil Aviation Administration
Tel.: +370 5 273 9259
+370 5 273 9260
Mob.: +370 698 85 945

10. Seasonal Availability

Snow clearing equipment: Available

11. Hotels

In the city

12. Restaurant

In the city

13. Tourist Office

In the city

14. Medical Facilities

First Aid at AD

Hospitals in the city

15. Transport

Buses and taxis, rent a car at AD

16. Remarks

- a. Departing aircraft shall contact TWR to obtain the ATC clearance before taxiing. Frequency 118.200 MHz is to be used. Departing aircraft shall obtain the push-back and taxi clearance from TWR on 118.200 MHz.
- b. School- and training, technical test flights can only be made after permission there to has been obtained from Vilnius TWR.
- c. RWY classification:

<u>RWY Nr.</u>	<u>RWY code</u>	<u>Surface</u>
02	4E	Asphalt-Concrete
20	4E	Asphalt-Concrete

AERODROME CHART

VILNIUS / INTL



AD ELEV: 646'
ARP: 54 38 13N 025 17 16E

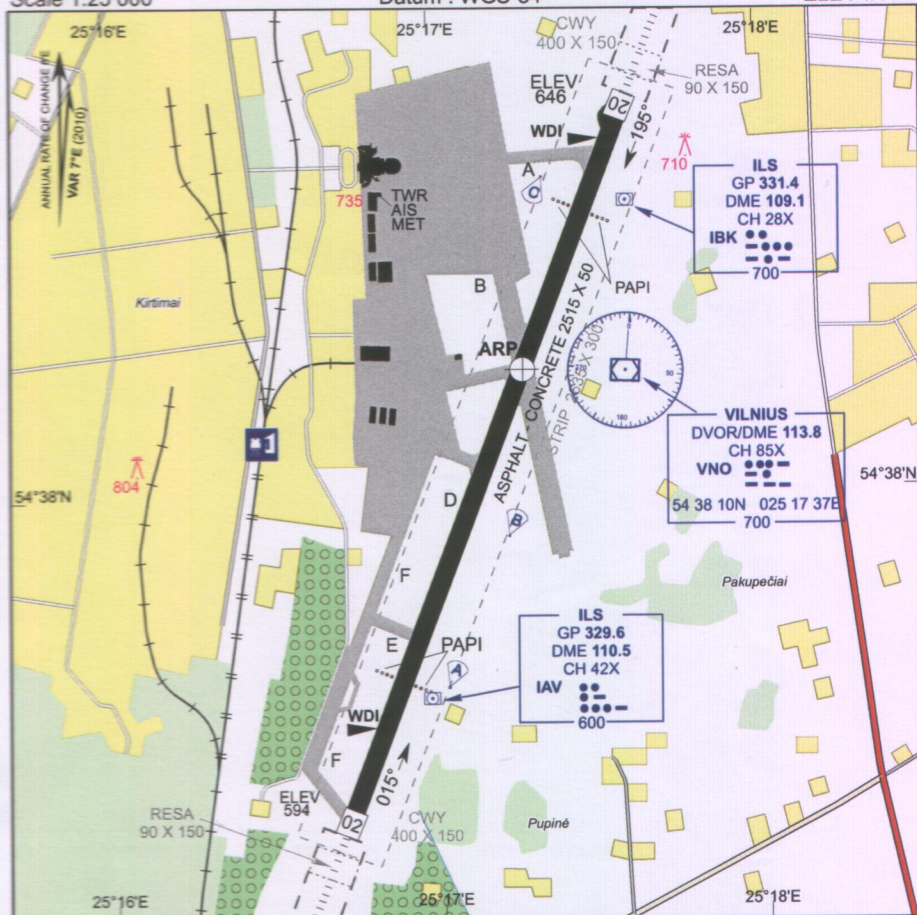
VILNIUS TOWER : 118.200

VILNIUS ATIS 125.800 FIS : VILNIUS INFORMATION 123.850

Scale 1:25 000

Datum : WGS-84

ELEV IN FT



RWY Nr.	DIRECTION	THR	RWY DIMENSIONS MTOM (kg)	SURFACE	NOTES
02	022° GEO 015° MAG	54 37 25N 025 16 43E	2515 X 50	ASPHALT	TWYs lights: edge lights LIM red stop bars lights holding positions TWY A, B, D, E and F LIL RWY 02/20 Elevated RWY edge lights 0.30m
20	202° GEO 195° MAG	54 38 41N 025 17 35E	PCN 83 F / D / X / T	CONCRETE	

APCH lights:
RWY 02 SFL 600m LIH CAT II
RWY 20 LIH CAT I
Visual slope PAPI
RWY 02 3.0° MEHT (70FT)
RWY 20 3.0° MEHT (72FT)

RWY lights:
white, last 600 m yellow LIH
white CL, next 600m white and
red alternately last 300m red LIH
green THR RTIL, TDZ RWY 02 900m white LIH
red end lights LIH

Warnings:
80m from threshold 20 towards
ARP there are slopes 0.45 - 0.95%

Changes: CWY dimensions.

AERODROME GROUND MOVEMENT
AND PARKING CHART

VILNIUS / INTL



APRON ELEV: 623'
ARP: 54 38 13N 025 17 16E

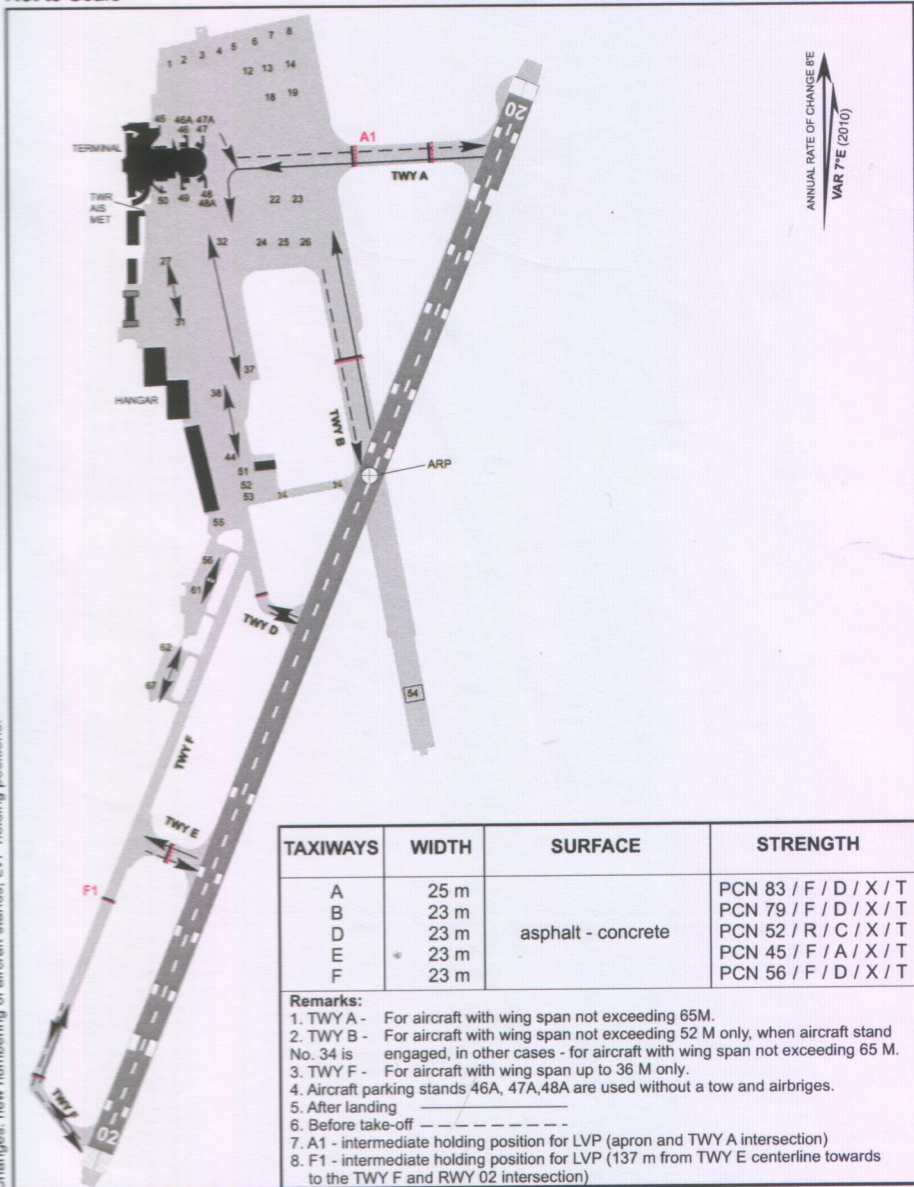
VILNIUS TOWER : 118.200

VILNIUS ATIS 125.800 FIS : VILNIUS INFORMATION 123.850

Not to Scale

Datum : WGS-84

ELEV IN FT



ANNUAL RATE OF CHANGE BE
VAR 7°E (2010)

TAXIWAYS	WIDTH	SURFACE	STRENGTH
A	25 m	asphalt - concrete	PCN 83 / F / D / X / T
B	23 m		PCN 79 / F / D / X / T
D	23 m		PCN 52 / R / C / X / T
E	23 m		PCN 45 / F / A / X / T
F	23 m		PCN 56 / F / D / X / T

Remarks:

1. TWY A - For aircraft with wing span not exceeding 65M.
2. TWY B - For aircraft with wing span not exceeding 52 M only, when aircraft stand No. 34 is engaged, in other cases - for aircraft with wing span not exceeding 65 M.
3. TWY F - For aircraft with wing span up to 36 M only.
4. Aircraft parking stands 46A, 47A, 48A are used without a tow and airbriges.
5. After landing -----
6. Before take-off -----
7. A1 - intermediate holding position for LVP (apron and TWY A intersection)
8. F1 - intermediate holding position for LVP (137 m from TWY E centerline towards to the TWY F and RWY 02 intersection)

Changes: new numbering of aircraft stands; LVP holding positions.

VISUAL APPROACH CHART

VILNIUS / INTL



AD ELEV: 646'
ARP: 54 38 13N 025 17 16E

VILNIUS TOWER: 118.200 ATIS 125.800

FIS : VILNIUS INFORMATION 123.850

Scale 1:200 000

Datum : WGS-84

ELEV IN FT, BRG, TRACK ARE MAG



VFR holding

Entry and exit point for VFR traffic



Recommended arrival routes for visual flight path compulsory with radio communication requirement



Recommended departure routes for visual flight path compulsory with radio communication requirement

PAPI(MEHT)

RWY 02: Left/Right 3.0° (70 FT)
RWY 20: Left/Right 3.0° (72 FT)